



Surgical Start Time

Changing OR Culture



Dr. Marijo Odulio
Shelley Movold



We have no disclosures or conflicts.

Background – 3 Realities

- Limited OR time
- Doing more MIS (minimally invasive surgery) which requires more OR time than open cases
- Growing surgical waitlist



Objective

- Improve patient care by reducing wait time for surgery



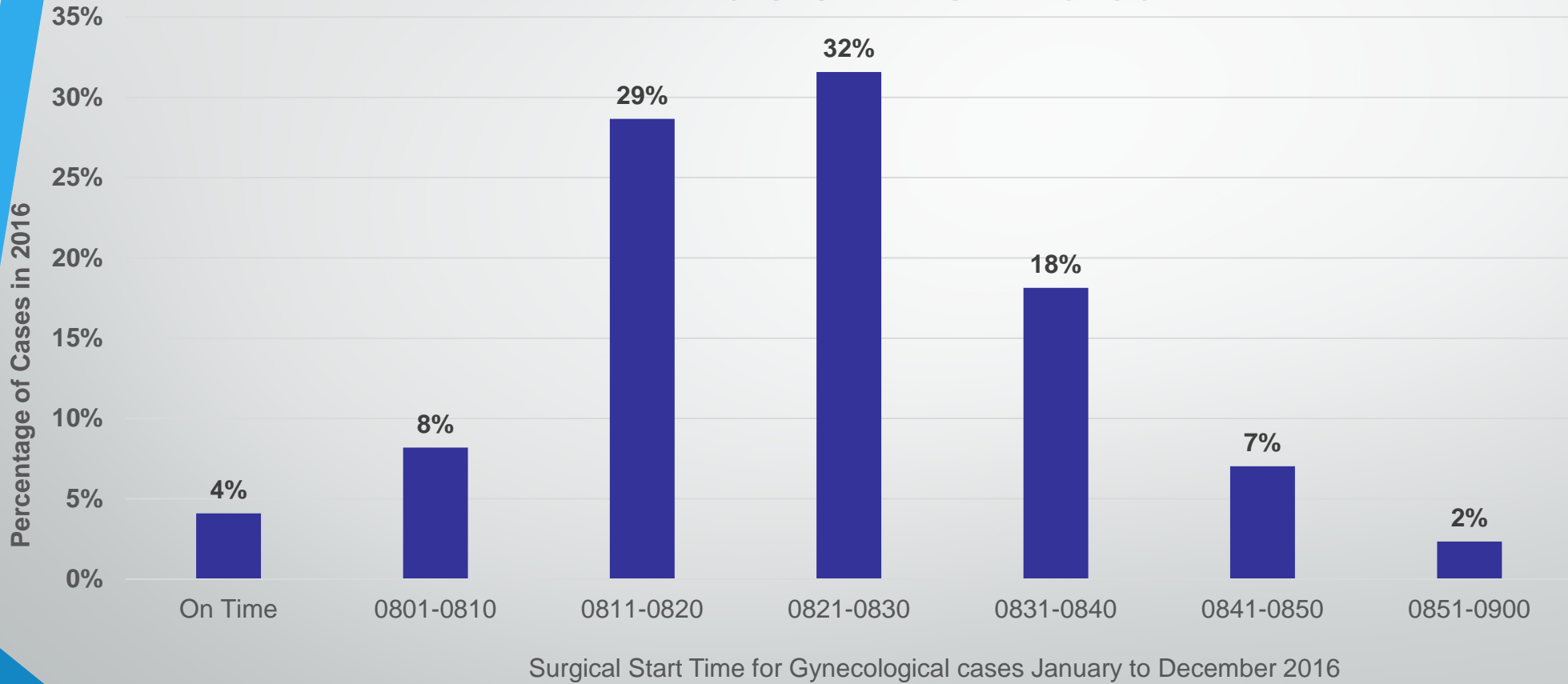
Strategy

- Efficiently use our limited OR time
- PQI Project: Surgery Start (start on time)



THINK **BIG**  *MOVE*  **FAST** TM

Baseline Data



Baseline Data 2017

- 35 surgical slates from in 2017 (Jan to Dec)
- 21 slates went over time (60% of total slates)
- 35 minutes over on average

Addressing Culture



Possible Barriers Identified:

- OR Culture

Mitigation:

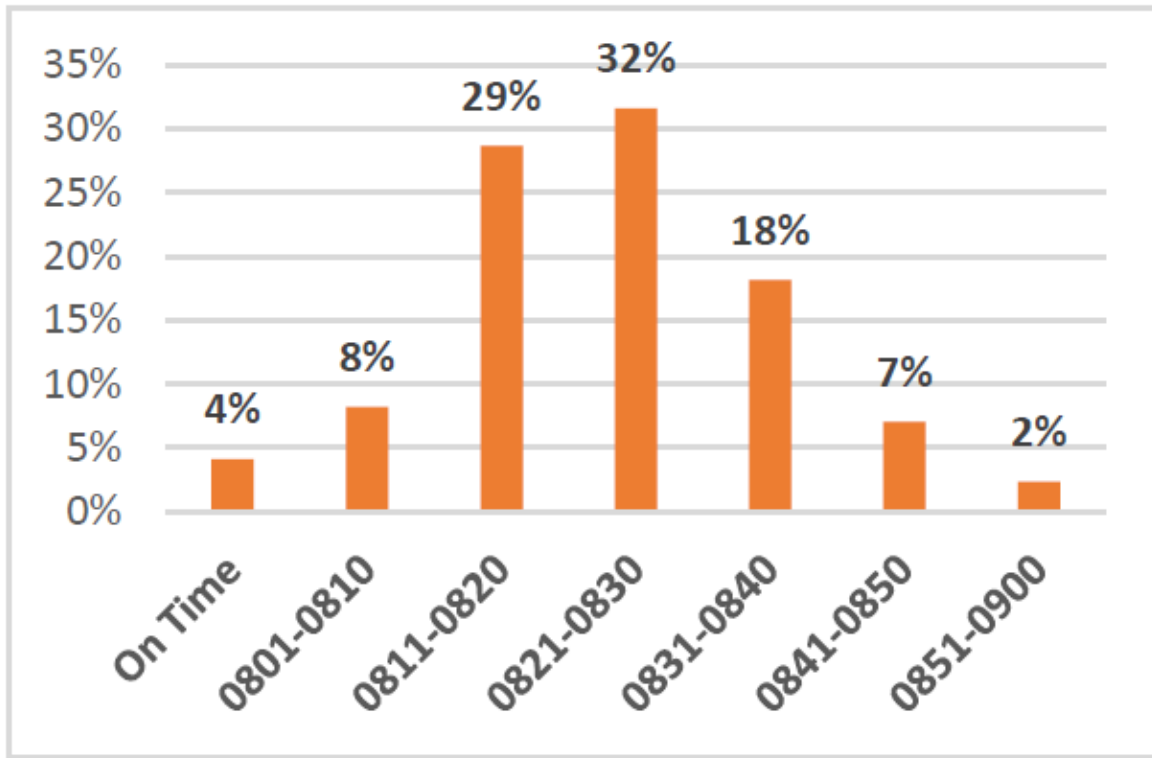
- Building a High Functioning Team Workshop

Surgery Start: PDSA Cycle #1

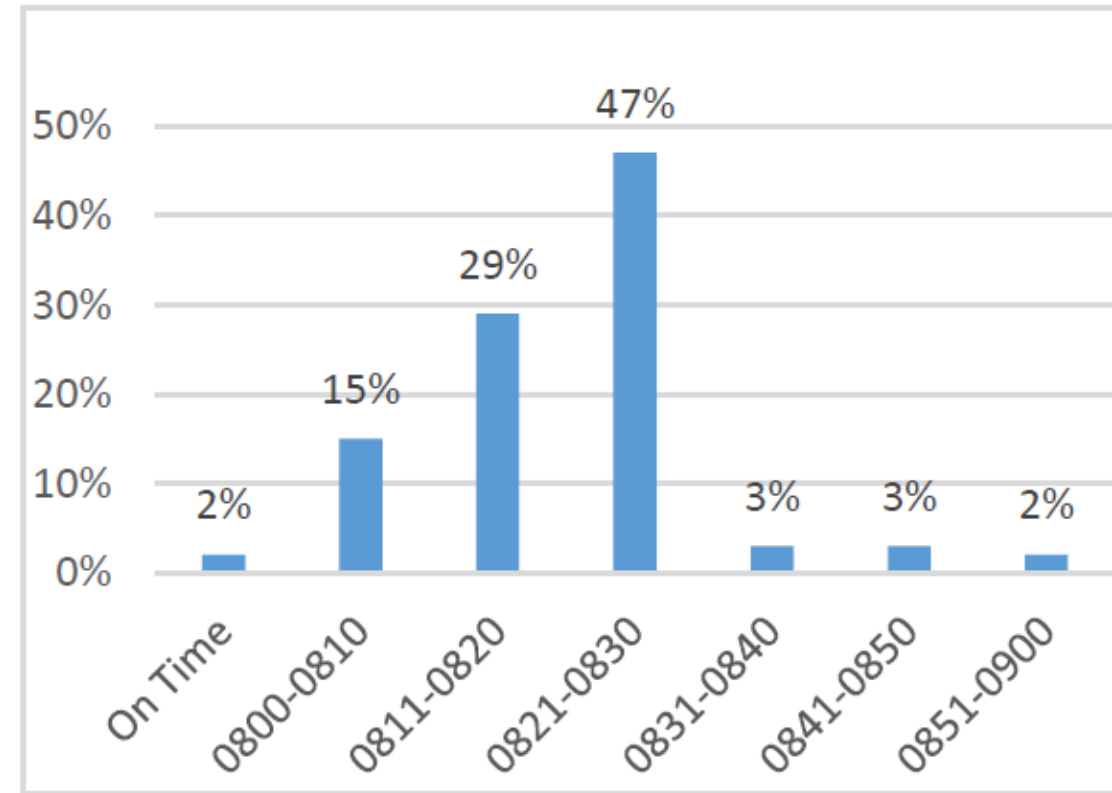
1. Have the surgeon in the OR at 0745 to:

- Provide leadership to the room
- Improve communication between team members
- Assess whether the room was ready for the first operation in terms of equipment needs
- Perform the time out

Surgical Start Times

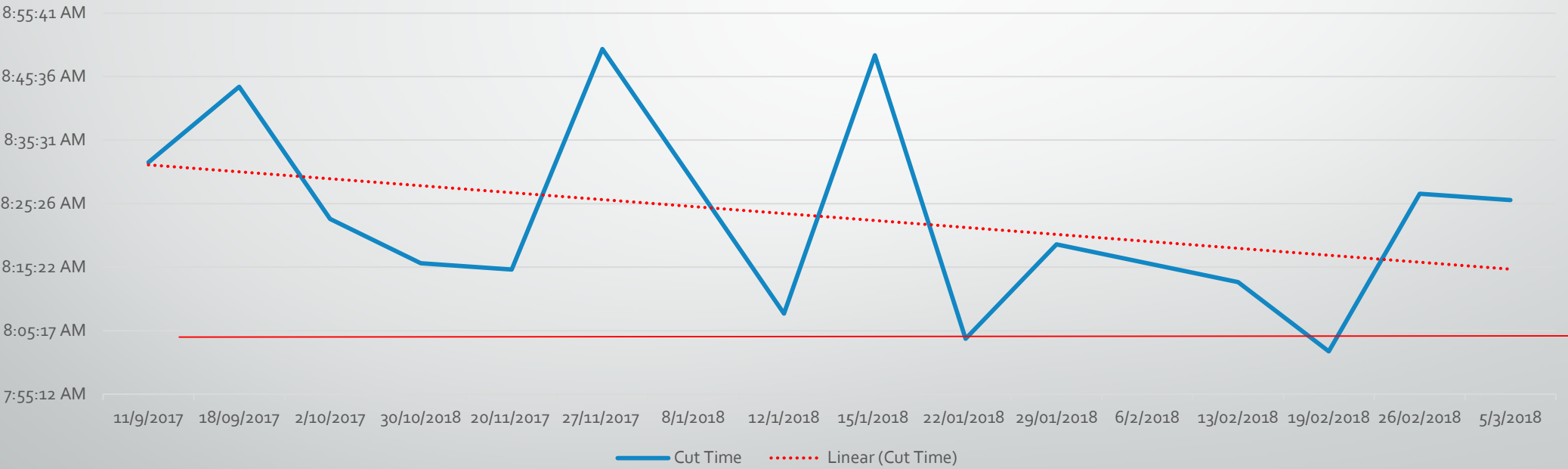


Graph 2: Surgical Start times Jan-Dec. 2016

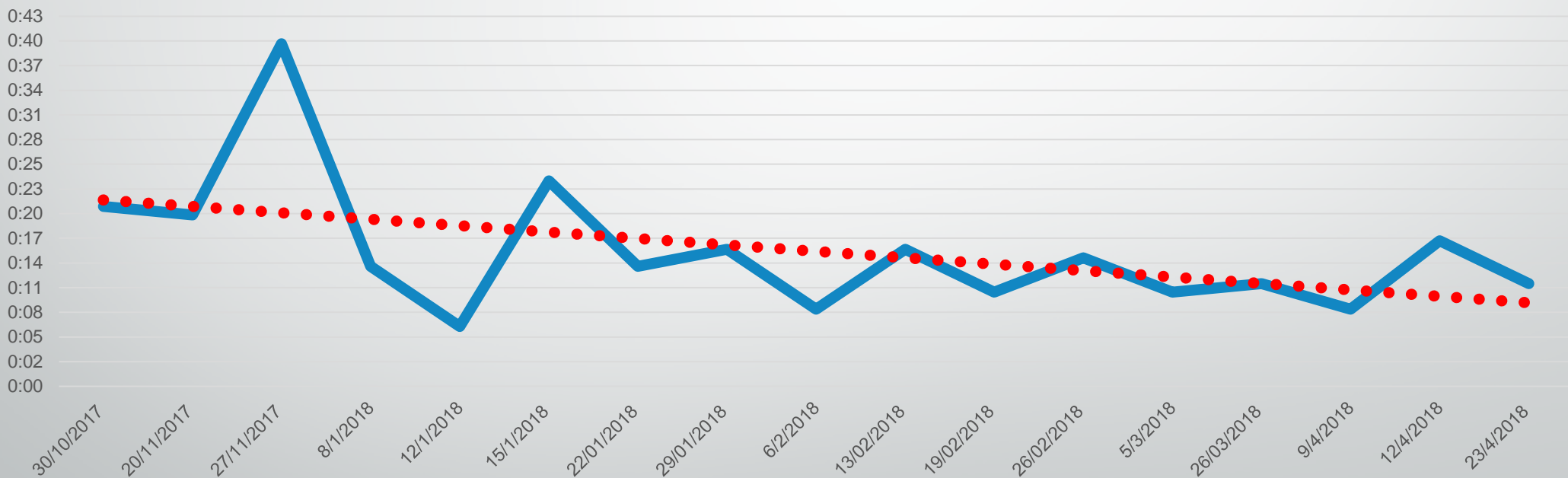


Graph 3: Surgical Start time Jan-Apr 2018

Surgical Start Times



Time to Position/Prepare the Patient After Intubation





Surgery Start: PDSA Cycle #2

Continue to have the surgeon in the room & have the IVs inserted before the patient enters the operating room.

IV Insertion Prior to Patient being in the OR



Surgery Start: PDSA Cycle #3

The team discovered:

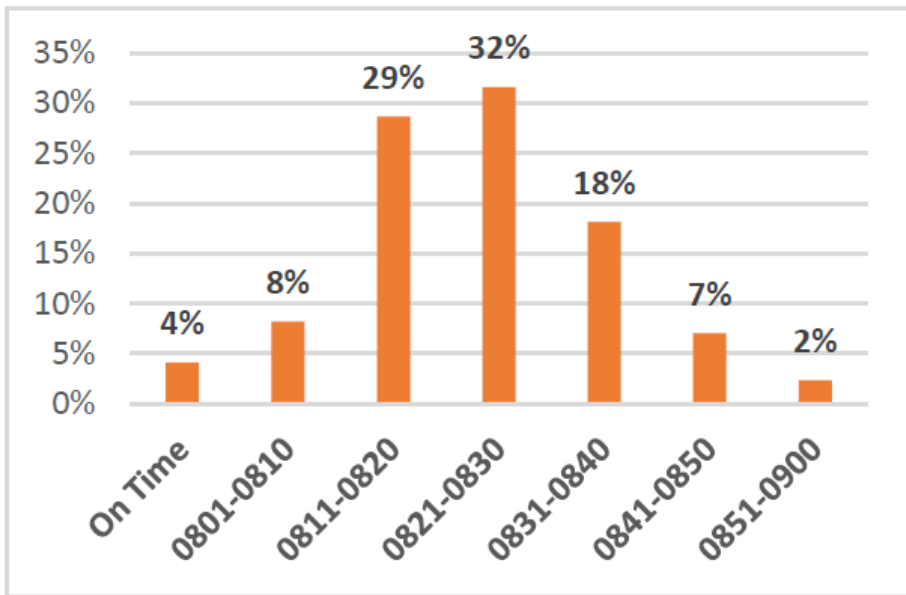
- There was a minimum amount of time to get the patient ready for surgery
- It took 25-30 minutes
- Needed to have the entire team in the OR by 0730 to start surgery at 0800

PDSA Cycle #3 Results

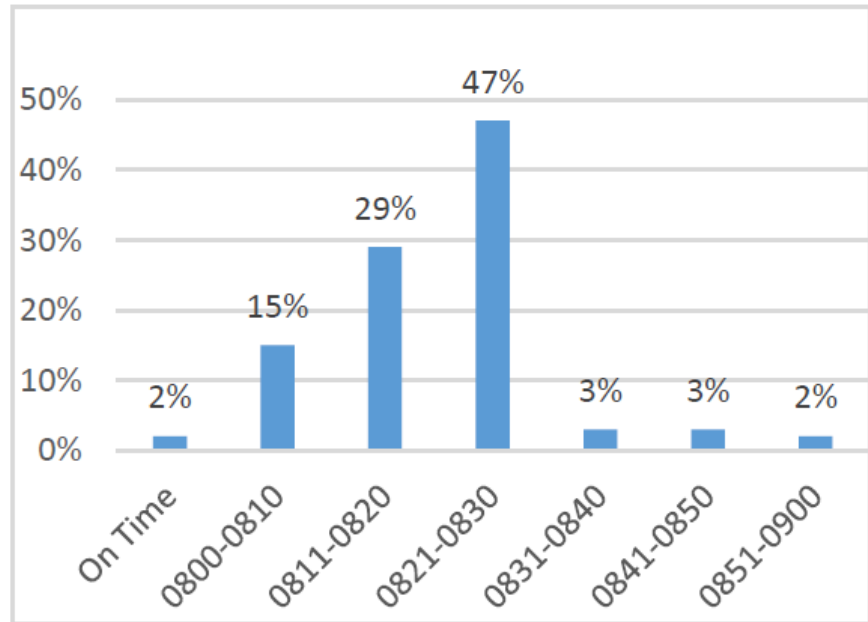
(Patient in the OR at 0730)

- 10 slates to date & 7 surgical starts on or before 0800
- 3 cases that were late:
 - Case got bumped for emergency c-section (1018)
 - Anesthetist was late (0820)
 - 2 RNs in the OR training and case had a large set up (0812)
- no ORs ran overtime (past 1530)
- were able to add emergency cases to some OR slates

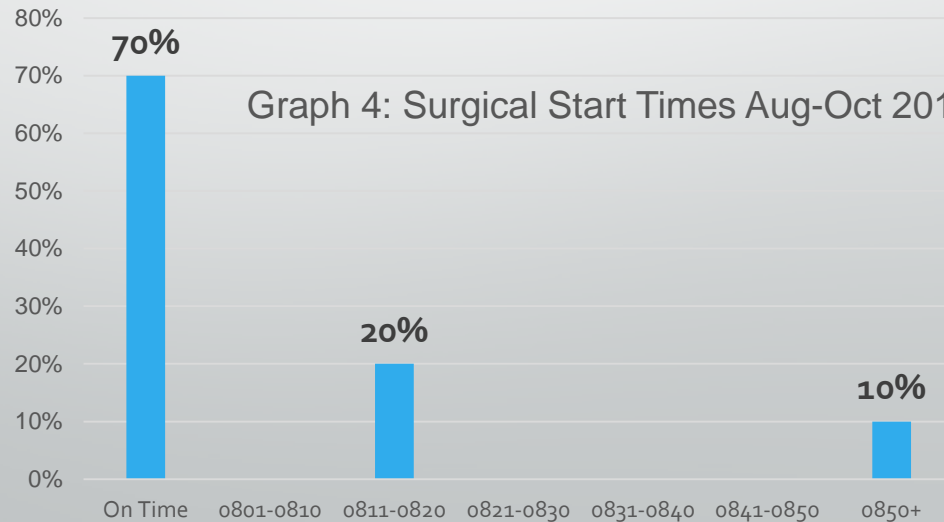
Surgical Start Times



Graph 2: Surgical Start times Jan-Dec. 2016



Graph 3: Surgical Start time Jan-Apr 2018



Graph 4: Surgical Start Times Aug-Oct 2018

Lessons Learned

- Change takes time especially when it involves a culture change
- Expect resistance even when the change improves patient care
- Be persistent!
- Start small and build your improvement project
- Big things can happen when you have a vision and are willing to put in the effort!